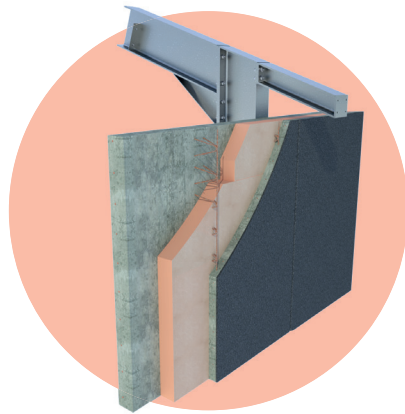



Phenolic foam insulation board for prefabricated concrete sandwich panels and external walls



SAFE-R GD is a Euroclass D phenolic foam insulation board finished on both sides with a non-woven glass tissue facing, alkaline resistant.

Application	Insulation boards for prefabricated concrete sandwich panels and external walls
Insulation	Phenolic foam (PF) Declared lambda-value (λ_D) : 0,023 W/m.K (d < 50 mm) 0,021 W/m.K (50 mm ≤ d < 100 mm) 0,020 W/m.K (d ≥ 100 mm)
Facing	GD : non-woven glass tissue, alkaline resistant
Dimensions	Standard : 2400 x 1200 mm Also available upon request in size 1200 x 600 mm
Edge finish	Straight on the 4 sides 

Insulation-thickness [mm]	R _{D INSUL} value [m ² K/W] CE	Boards per pack	m ² per pack	Boards per pallet	m ² per pallet	m ² full load [= 11 pal.]
SAFE-R GD : 2400 x 1200 MM						
25	1,05	12	34,56	96	276,48	3.041,28
30	1,30	10	28,80	80	230,40	2.534,40
40	1,70	7	20,16	56	161,28	1.774,08
50	2,35	6	17,28	48	138,24	1.520,64
60	2,85	5	14,40	40	115,20	1.267,20
70	3,30	4	11,52	32	92,16	1.013,76
80	3,80	4	11,52	28	80,64	887,04
90	4,25	4	11,52	24	69,12	760,32
100	5,00	4	11,52	24	69,12	760,32
110	5,50	3	8,64	21	60,48	665,28
120	6,00	3	8,64	18	51,84	570,24
130	6,50	3	8,64	18	51,84	570,24
140	7,00	2	5,76	16	40,32	506,88
160	8,00	2	5,76	14	40,32	443,52

Insulation-thickness [mm]	R _{D INSUL} value [m ² K/W] CE	Boards per pack	m ² per pack	Boards per pallet	m ² per pallet	m ² full load [= 22 pal.]
SAFE-R GD : 1200 x 600 MM						
25	1,05	18	12,96	180	129,60	2.851,20
30	1,30	16	11,52	160	115,20	2.534,40
40	1,70	12	8,64	120	86,40	1.900,80
50	2,35	10	7,20	100	72,00	1.584,00
60	2,85	8	5,76	80	57,60	1.267,20
70	3,30	7	5,04	70	50,40	1.108,80
80	3,80	6	4,32	60	43,20	950,40
90	4,25	5	3,60	50	36,00	792,00
100	5,00	5	3,60	50	36,00	792,00
110	5,50	4	2,88	40	28,80	633,60
120	6,00	3	2,16	42	30,24	665,28
130	6,50	3	2,16	36	25,92	570,24
140	7,00	3	2,16	36	25,92	570,24
160	8,00	3	2,16	30	21,60	475,20

* Minimum order quantity of 500m² per thickness. For delivery terms, please contact UNILIN



Technical properties

Declared thermal conductivity : λ_D according to EN 13166 : 2012 + A2 : 2016	0,023 W/m.K (d < 50 mm) 0,021 W/m.K (50 mm ≤ d < 100 mm) 0,020 W/m.K (d ≥ 100 mm)
Compressive strength at 10% deformation : CS(10/Y)100 according to EN 826	≥ 100 kPa (1,0 kg/cm ²)
Closed cell content	≥ 90%
Dimensional stability 48h, 70°C, 90%RH 23°C, 50%RH	DS(70,90) : $\Delta e_{l,b} \leq 1,5$ / $\Delta e_d \leq 1,5$ DS(N) : $\Delta e_{l,b} \leq 0,5$ / $\Delta e_d -$
Deformation under compressive load and temperature conditions	DLT(1) ≤ 5%
Density of the PF foam	36,5 kg/m ³ ± 1,5 kg/m ³
Reaction to fire class	D-s2, d0 according to EN 13501-1

Certificates

KOMO	Approval pending
BBA	4803 Germany : WLS 021/WLS 024
CE	λ 0,020 - 0,023 W/m.K
DOP	SAFE-R GD v1
EPD	BES 6001 RS0039



Nr. EX-UK-19-4

For stock- and delivery conditions: inform with UNILIN, division insulation.

UNILIN, division insulation - Waregemstraat 112 - B-8792 Waregem – T +32 56 73 50 91 – F +32 56 73 50 90
E info.insulation@unilin.com – W www.unilininsulation.com – H.R Kortrijk 87.153 – VAT BE 0405 414 072

